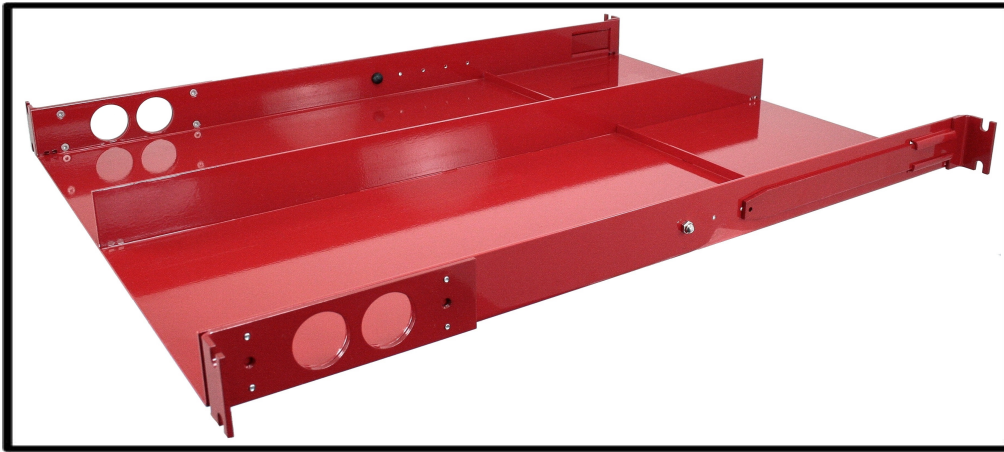


## Rack Mount Components:



**Main Rack Mount Chassis**



**Power Supply Housing**

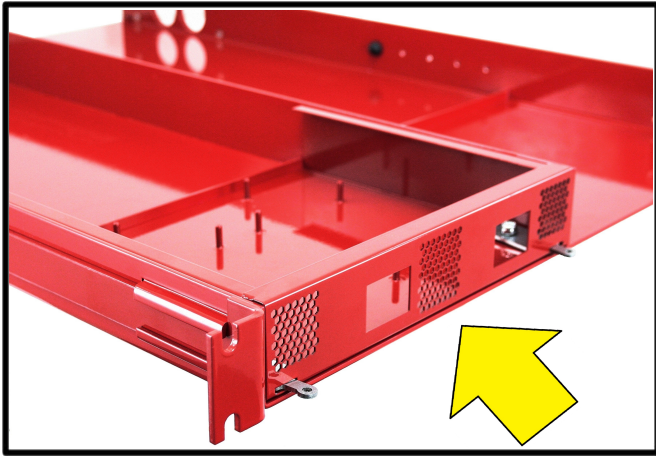


**Dual-Redundant Power Supply (Two Included)**

**For More information**

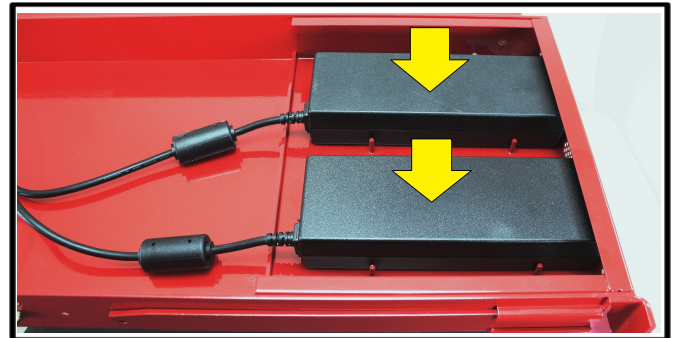
**Customer Service** is available from our website: [www.datacomsystems.com](http://www.datacomsystems.com) or by calling +1 315 463 9541

## Installing the Power Supplies:



### Step 1:

On the back of the Main Chassis, slide in the Power Supply Housing. The back of the unit is identified by a lack of circular vents on the sides of the chassis. When inserted completely, a clicking noise will sound, securing the housing.



### Step 2:

Install the Dual Redundant Power Supplies into the Power Supply Housing. They will fit within the pins located on the housing. Install the power supplies so that the cords are facing inwards on the Chassis.

## Installing the Network Access Product:



### Step 3:

On the opposite end of the Main Chassis, install your Network Access Product. When inserted completely, a clicking noise will sound, securing the product.



### Step 4:

On the back of the installed Network Access Product, connect the cables from the Dual Redundant Power Supplies in Step 2 to the power ports.

**For More information**

**Customer Service** is available from our website: [www.datacomsystems.com](http://www.datacomsystems.com) or by calling +1 315 463 9541



# Rack Mount Guide



## Installing to the Rack:



### Step 5:

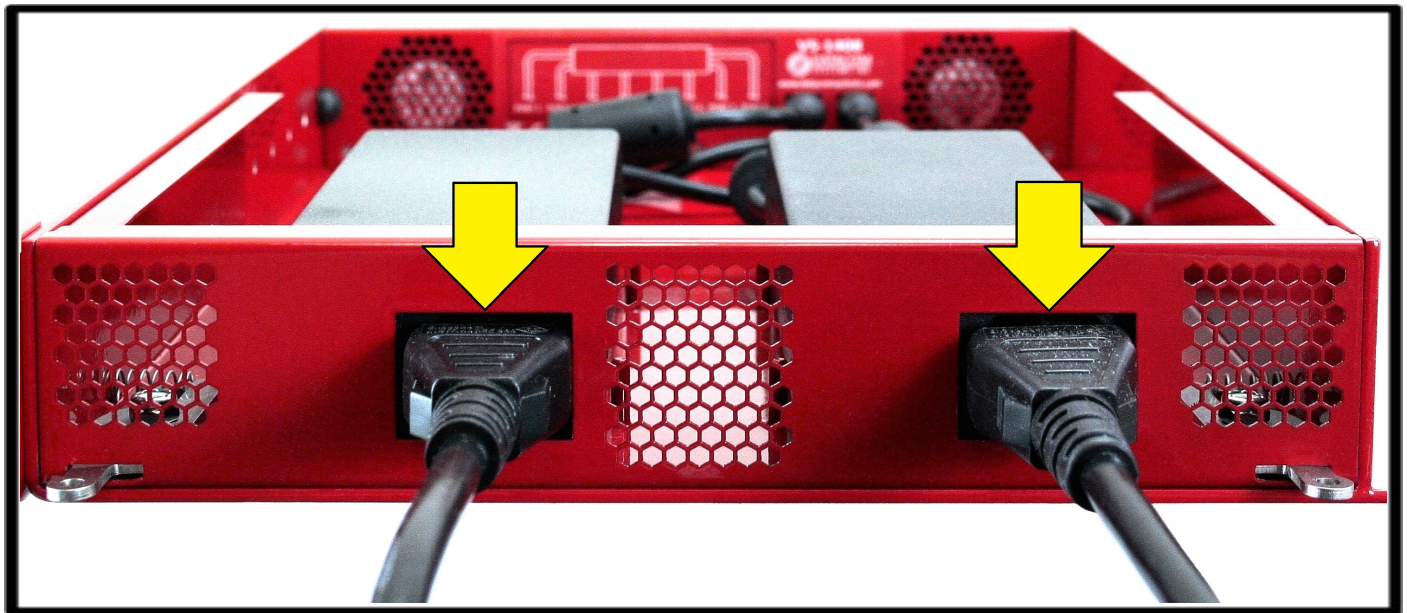
Once the the Main Rack Mount Chassis has been fully populated using steps 1-4, line the front of the chassis up to holes in the rack.



### Step 6:

Insert screws and tighten the Main Rack Mount Chassis to the rack. Repeat the process to secure the chassis to the holes on the opposite side of the rack.

## Connecting the units to power:



### Step 7:

Once the fully populated Rack Mount Chassis has been installed to the rack, insert both AC cords into the slots on the back of the chassis. Connect the opposite sides of the cords to a power source. We recommend installing each power supply on a different circuit, allowing the Network Access Device to remain powered even if power is lost to a single circuit.

## For More information

**Customer Service** is available from our website: [www.datacomsystems.com](http://www.datacomsystems.com) or by calling +1 315 463 9541