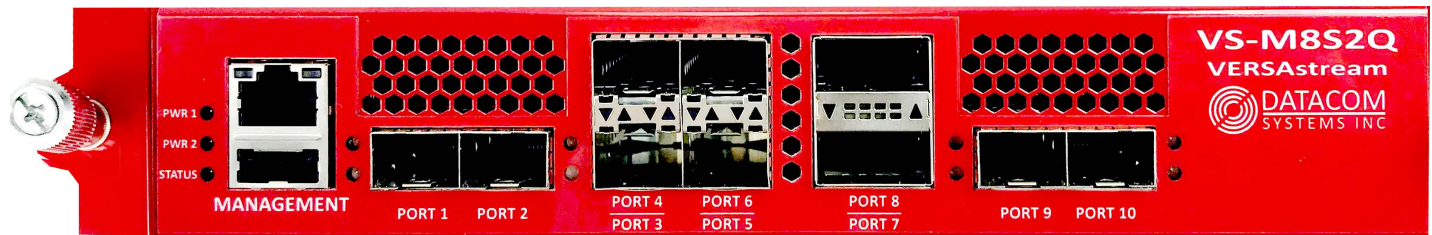




VERSAsystem™ VS-M8S2Q

10 Port 10G/40G Network Packet Broker



Scalable, flexible, powerful, and compact

The VS-M8S2Q provides eight SFP+ ports supporting copper or fiber 1G/10G, and two QSFP ports supporting 40G. It can accept 40G outputs from fiber taps, allowing 10G tools to monitor 40G links. The data aggregated before being handed off to the tools, or may be sent as copies of the original individual 10G streams within the 40G link. The flexible mesh design allows a nearly unlimited number of units to be interconnected and used as a single logical entity of higher density.

Data Filtering

Aggregating presents oversubscription and packet loss risk. Hardware based Layer 2 to Layer 4 filtering allows users to select only specific traffic of interest.

Aggregation and Replication

Any-to-Any functionality allows aggregation to single tools, and replication to multiple tools. Any port may be used as an input or output. 40G QSFP interconnects minimize risk of packet loss between units when a mesh is deployed.

Load Balancing

Session based load balancing allows multiple Ingress ports to be equally distributed among multiple output ports. If any tool capture NIC fails, traffic is automatically distributed among the remaining Egress ports.

Related Products

The FTC-24 modular tap system chassis and modules are an ideal complement to the VS-M8S2Q. Holding up to 24 individual tap modules, the chassis supports 40G MTP/ modules. users may also populate the chassis with other tap module types - ranging from 1G to 10G - with a broad array of fiber types and split ratios offered.

sFlow Support

An 'sFlow Agent' can be configured to run on the VERSAsystem VS-M8S2Q. This agent samples the network traffic and creates sFlow datagrams. The sample datagrams are then sent to an 'sFlow Collector' elsewhere in the network. The Collector can send the data to an 'sFlow analyzer'. The position of the VS-M8S2Q as a central point through which data from multiple links is passing, makes it an optimal point for the 'sFlow Agent' to be enabled, thus sending sFlow datagrams from multiple network devices to the collector.

Optional IPFIX Support

The VERSAsystem VS-M8S2Q can function as an IPFIX Observation Point, using the IPFIX Metering Process to collect data packets, optionally filters them and aggregates information about these packets. It also operates as an IPFIX Exporter to gather this and other Observation Points together into an Observation Domain. This information is then sent via the IPFIX protocol to a IPFIX Collector.

Highlights

- Consolidate tools for greater efficiency and reduced cost
- Monitor 40G sources with 10G tools
- Share scarce SPAN and Tap monitor ports without maintenance windows
- No built in taps - Deploy tools right away without impacting your production network, simplifies the change control process

Features

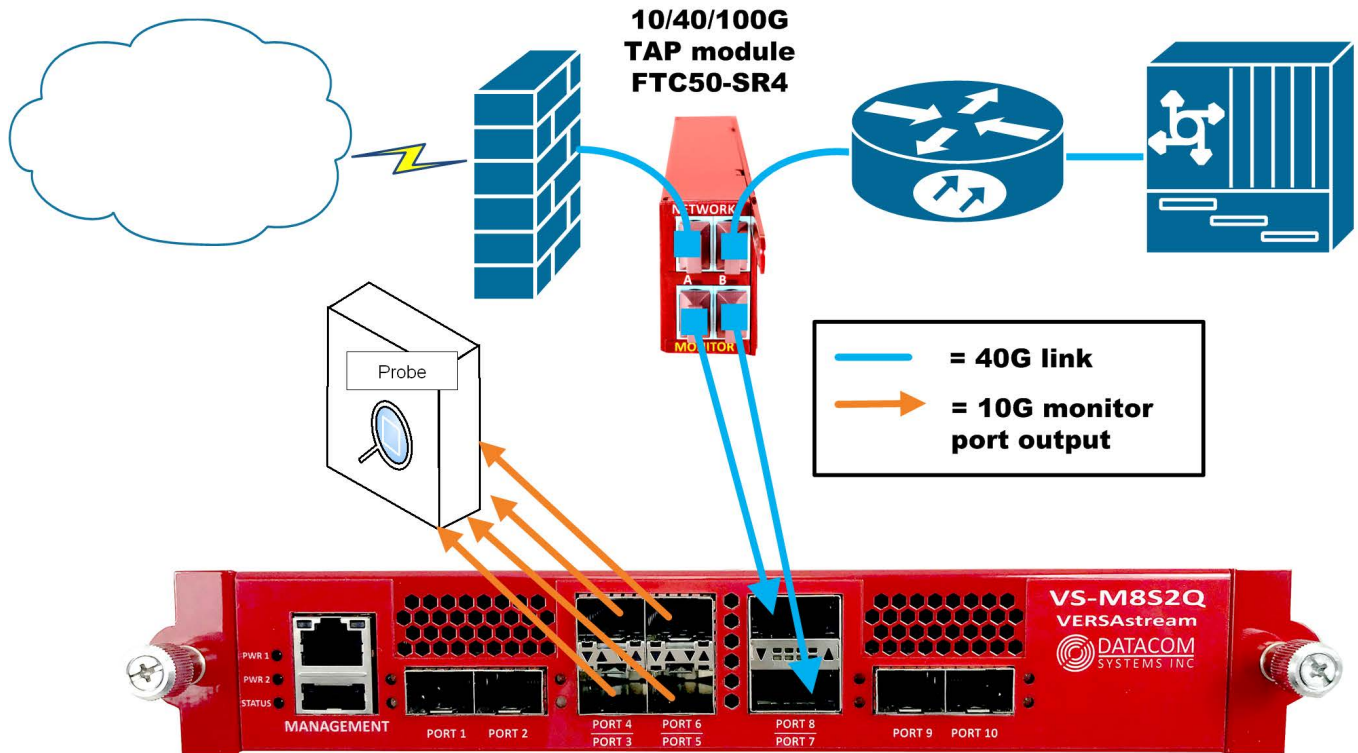
- Monitor two 40G links in 1 RU with 16 SFP+ and 4 QSFP monitor ports in 1RU (requires two units and two separate taps)
- SFP+ ports support 1G/10G fiber, 10/100/1000/10G copper, and DAC
- Load Balancing – Balance sessions across multiple outputs for monitoring redundancy
- Filtering – Line-rate hardware-based filtering can eliminate port oversubscription
- Filter on – Ipv4 Src/Dst Address; MAC Address; Protocol, Port, and Ethertypes (e.g. MPLS, VLAN, Ipv6 Src/Dst Address)
- Aggregation/Regeneration – Combine multiple network links or channels into one stream or send copies to multiple tools to share data sources
- SNMP, SYSLOG and email notification mechanisms
- Radius, TACACS+ authentications
- Redundant power sources and fans
- Self-discovery mesh network capable for single control and data plane.
- Sflow and IPFIX capable





VERSAsystem™ VS-M8S2Q

10 Port 10G/40G Network Packet Broker



Technical Specifications

Ports

Any-to-Any Ports: Eight (8) SFP+ and two (2) QSFP ports
 Management Port: RJ45
 Console Port: USB Device Mode

Dimensions(HxWxD)

1.5 x 8.3 x 12.5 in (3.81 x 21.08 x 31.75 cm)

Weight: 4.75 lbs (2.2 Kg)

Environmental

Operating Temperature: 32°F to 131°F (0°C to 55°C)
 Storage Temperature: -22°F to 149°F (-30°C to 65°C)
 Humidity: 5% to 95% non-condensing

Power Requirements:

Two (2) External AC Adapters Redundant Hot Swappable Power Supplies (Included)
 Individual Power Supply Rating: 100-240V 50-60Hz 1.3A Maximum Power Consumption: 60 Watts or less

Safety: CB IEC 62368-1

Emissions: FCC, EN, ICES-003

Standards:

FCC 47CFR PT 15 SPT B:2017
 ICES-003 Issue 6:2016
 CENELEC EN 55032:2012

Certifications: CE, RoHS

Warranty

One Year Hardware and Software support included.
 Premium Support option available

Filtering

IPv4 Address Sources and Destinations, Subnets MAC Address Sources and Destinations
 Ports
 Ethertype
 VLAN
 IPv6 Address Sources and Destinations, Subnets

ORDER INFORMATION

Product

VS-M8S2Q
 SFP-RJ45
 SFP-RJ45-10G
 SFP+SR/SX
 SFP+ LR/LX
 SFP+DAC(2M)
 QSFP-40G-SR4
 QSFP-40G-LR4
 QSFP+DAC(2M)

Description

Any-to-Any Ports: Eight (8) SFP+ and two (2) QSFP ports
 10/100/1000BT copper SFP transceiver module
 10G copper SFP+ transceiver module
 10G/1G SFP transceiver module (50 or 62.5 micron 300m)
 10G/1G SFP+ transceiver module (9 micron 10km)
 10G SFP+ 2 meter direct attach passive cable
 40G QSFP fiber transceiver (50 micron 150m)
 40G QSFP fiber transceiver (50 micron 10Km)
 40G QSFP 2 meter direct attach passive cable

Other transceivers and DAC cable lengths available on request

RMC-2G

Rack mount chassis - fits two units into 1RU